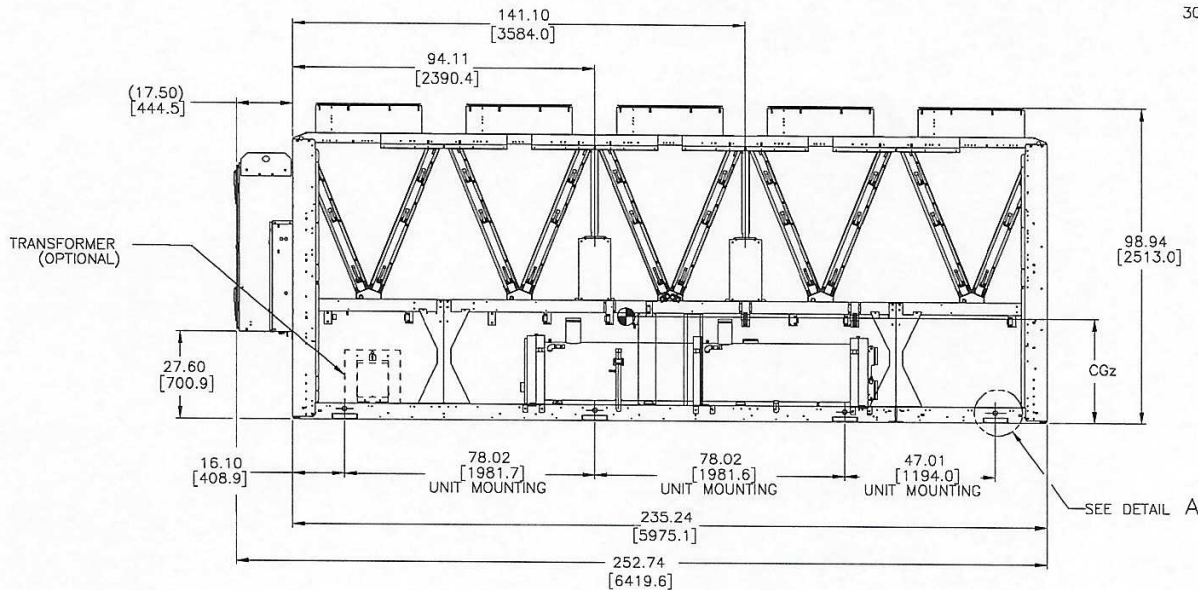
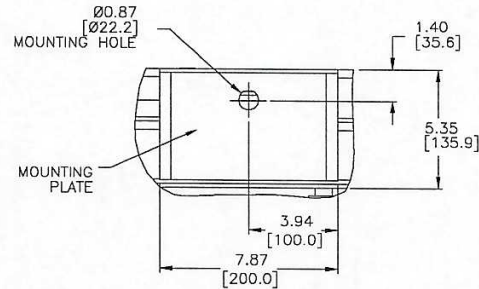
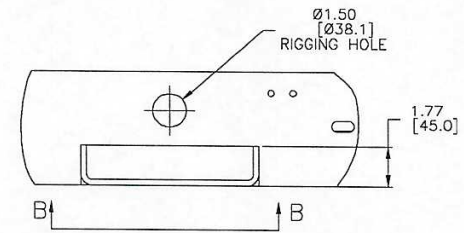


# AquaForce™ Air-Cooled Variable Speed Screw Chiller

UNIT	CENTER OF GRAVITY									
	CGx						CGy		CGz	
	MCHX		AL/CU		CU/CU					
	INCH	MM	INCH	MM	INCH	MM	INCH	MM	INCH	MM
30XV-140 HIGH	103.0	2616	103.8	2636	105.2	2673	45.7	1162	34.2	868
30XV-160 MID	102.4	2602	103.3	2623	104.7	2660	45.7	1161	33.9	861
30XV-180 MID	103.4	2627	104.2	2647	105.6	2682	45.7	1161	33.8	859
30XV-200 STD	102.7	2609	103.6	2630	105.0	2667	45.7	1161	33.8	859

⊕ SYMBOL DENOTES CG



30XV FRONT VIEW  
(CONDENSER HEADER END)



JOB NAME:	-
BUYER:	-
SALES ENG.:	-
MODEL NO.:	-
JOB NO.:	-
P.O. NO.:	-
PREPARED BY:	-
ELECTRICAL CHARACTERISTICS:	-
JOB SITE LOCATION:	-
SALES OFFICE:	-
REFRIGERANT NO.:	-
NOTES:	-
COND: 1, 1A-1F COOLER: 2, 2A-2G MACHINE ASSEMBLY FRONT VIEW	-
DATE:	-
REVISION:	----
THIS DOCUMENT IS THE PROPERTY OF CARRIER CORP. AND IS DELIVERED UPON THE EXPRESS CONDITION THAT THE CONTENTS WILL NOT BE DISCLOSED OR USED WITHOUT CARRIER CORP. WRITTEN CONSENT.	
SUBMISSION OF THESE DWG'S. OR DOCUMENTS DOES NOT CONSTITUTE PART PERFORMANCE OR ACCEPTANCE OF CONTRACT.	
CARRIER DWG # 30XV60001000-F	
REV.:	01 OF 01
DATE:	7-15-2020
SUPERSEDES DWG. DATED:	-
30XV	
SHT 01 OF 07	