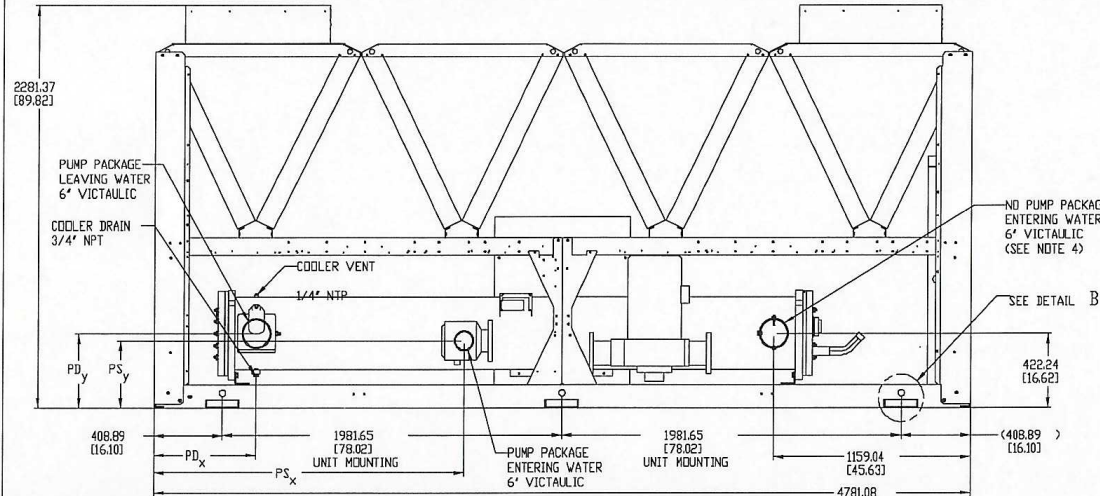
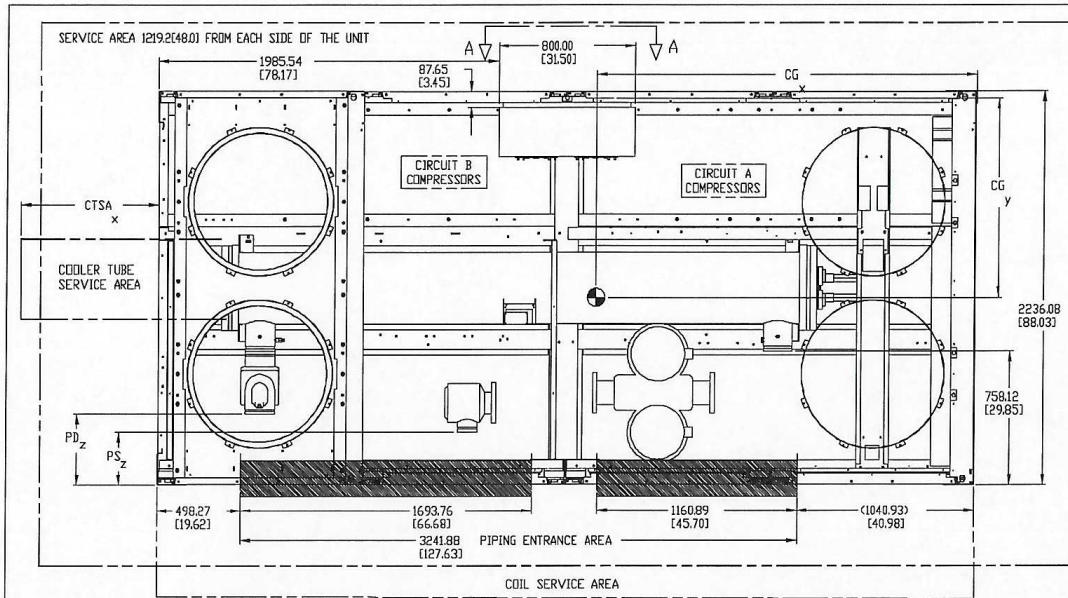


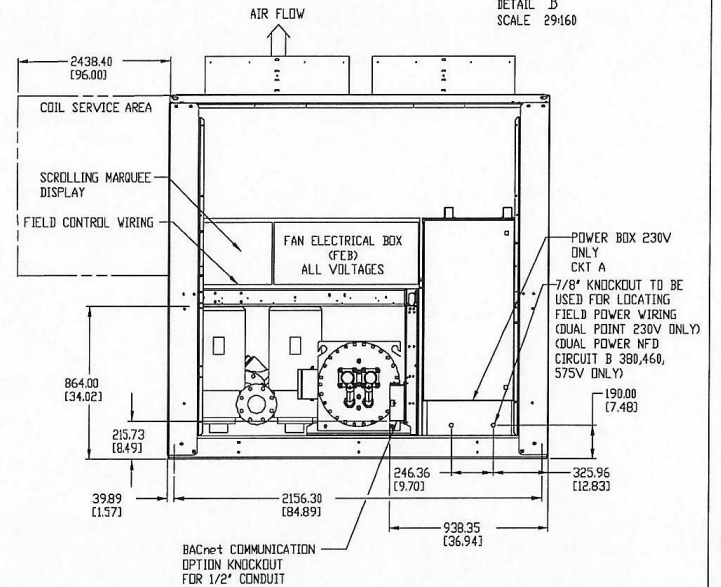
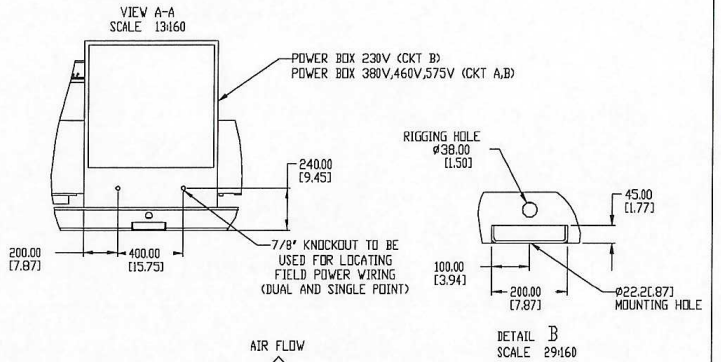
30RB150 with Greenspeed® Intelligence



| | WEIGHT | | WEIGHT | | WEIGHT | | WEIGHT | | WEIGHT | | WEIGHT | | CENTER OF GRAVITY | | PUMP SUCTION (F/S) | | | PUMP DISCHARGE (F/D) | | | COOLER TUBE SERVICE AREA | | | | |
|----------|--------|-------|--------|-------|--------|-------|---------|---------|--------|--------|--------|--------|-------------------|-------|--------------------|----|---|----------------------|---|---|--------------------------|---|--------|--------|--|
| | CU/AL | LB/KG | CU/AL | LB/KG | CU/AL | LB/KG | CU/AL | LB/KG | CU/AL | LB/KG | CU/AL | LB/KG | CU/AL | LB/KG | CG | CG | X | Y | Z | X | Y | Z | CTSA X | CTSA Y | |
| 30RB-130 | 8045 | 8960 | 9010 | 9933 | 7482 | 8325 | 2272 | 983 | 1808.5 | 281.9 | 60.9 | 1366.5 | 391.2 | 233.7 | 1447.8 | | | | | | | | | | |
| | 3649 | 4069 | 4097 | 4566 | 3359 | 3776 | (89.45) | (38.70) | (71.2) | (11.1) | (2.4) | (53.8) | (15.4) | (9.2) | (57.0) | | | | | | | | | | |
| 30RB-150 | 9174 | 10419 | 10139 | 11384 | 8517 | 9762 | 2392 | 983 | 1808.5 | 381 | 297.2 | 604.5 | 421.6 | 231.1 | 2905.8 | | | | | | | | | | |
| | 4161 | 4726 | 4599 | 5164 | 3863 | 4428 | (94.17) | (38.70) | (71.2) | (15.0) | (11.7) | (23.8) | (16.6) | (9.1) | (114.4) | | | | | | | | | | |

UNITED TECHNOLOGIES CARRIER
 P.O. BOX 4808 SYRACUSE, NY 13221
 THIS DOCUMENT IS THE PROPERTY OF CARRIER CORPORATION AND IS BELONGED UPON THE EXPRESS CONDITION THAT THE CONTENTS WILL NOT BE DISCLOSED OR USED WITHOUT CARRIER CORPORATION'S WRITTEN CONSENT.
 SUBMISSION OF THESE DRAWINGS OR DOCUMENTS DOES NOT CONSTITUTE PART PERFORMANCE OR ACCEPTANCE OF CONTRACT.

- NOTES: 1. UNIT MUST HAVE CLEARANCES AS FOLLOWS:
 TOP- TO NOT RESTRICT
 SIDES AND END- 6" FROM SOLID SURFACE, FOR AIRFLOW
 SIDE- 8" REQUIRED FOR COIL SERVICE AREA
 2. ALL PUMPS HAVE DRAINS LOCATED AT THE BOTTOM OF VOLUTE FOR DRAINING.
 3. TEMPERATURE RELIEF DEVICES LOCATED ON SUCTION LINE, LIQUID LINE AND FILTER DRIER OF EACH CIRCUIT AND HAVE 1/4" FLARE CONNECTION.
 4. NO PUMP PACKAGE LEAVING WATER CONNECTION IS SAME SIZE AND HAS SAME Y AND Z DIMENSIONS AS ENTERING WATER. ALSO HAS SAME PIDX DIMENSION AS PUMP PACKAGE.



| | | | | |
|----------|------------|---------------------------------|-----------------|-----|
| DATE | SUPERSEDES | 30RB-130,150 AIR COOLED CHILLER | 00DCN500001400A | REV |
| 06/10/10 | 04/20/10 | | | G.4 |